

ASC chassis **UTLI41** **UTLN41**

INSULATED

NON-INSULATED

AERIAL SPLICING CHASSIS



Working Height **43' 9" (13.3m)***

Horizontal Reach **25 ft 7 in (7.8 m)***

Basket Capacity **350 lbs (159kg)**

* dimensions vary according to model number and options



SPACIOUS 8' X 10' SPLICING LAB
6 ft X 6 in INTERIOR HEIGHT

**START SPLICING FASTER
ON THE JOB!**

All-in-One Solution
Compact Footprint
Maneuverable in Tight Spaces
Quick Set-Up Time
Security on the Job
Self-Contained Equipment Package
Heavy-Duty Design

HONDA
GENERATORS



1-888-765-3322



Utility Truck Equipment Co, L.L.C.

901 Enterprise Blvd

Hewitt, Texas 76643

Phone: 254-857-8204 Fax: 254-857-9253

www.UTECEquip.com

ASC chassis UTLI41

INSULATED

UTLN41

NON-INSULATED

AERIAL SPLICING CHASSIS

CHASSIS MINIMUM REQUIREMENTS

GVWR*	19,500 lbs
Front Axle GAWR*	7,000 lbs
Rear Axle GAWR*	14,500 lbs
Approx Weight of Stability	15,520 lbs

POWER SOURCE

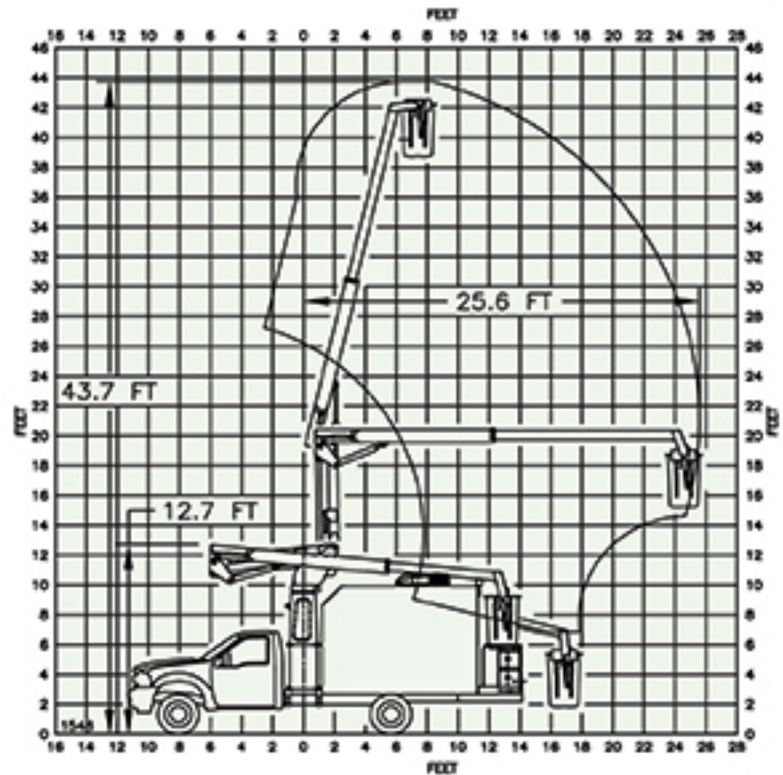
- Honda EU7000is
- Eco Throttle
- Long Run Times
- Electric Start
- 3 Year Warranty

COMPOSITE CHASSIS BODY

- Interior space 483 cubic feet
- Interior height 6 ft 6 in

AERIAL SPECIFICATIONS

- Horizontal Side Reach 25 ft 7 in (7.8 m)
- Height Bottom Basket* 38 ft 9 in (11.8 m)
- Working Height* 43 ft 9 in (13.3 m)
- Stowed Height* 12 ft 9 in (3.9 m)
- Std Basket Capacity 350 lbs (159 kg)
- 540 Degree Rotation
- HE Powered Aerial
- 24 VDC Powered Aerial - opt
- Proportional Upper Controls w/Single Handle Actuator
- Emergency Lower 12 VDC
- Side Mounted Walk-Thru Basket w/Door
- Hydraulic Basket Leveling
- Electric Tool Outlet @ Basket (UTLN)



ISUZU



UTLN41 meets and exceeds ANSI A92.9-2021 & Osha Requirements
*based on 32 in (0.81 m) Chassis Height



1-888-765-3322



Utility Truck Equipment C6 L.L.C.
901 Enterprise Blvd
Hewitt, Texas 76643
Phone: 254-857-8204 Fax: 254-857-9253
www.UTEQequip.com

THIS DOCUMENT

